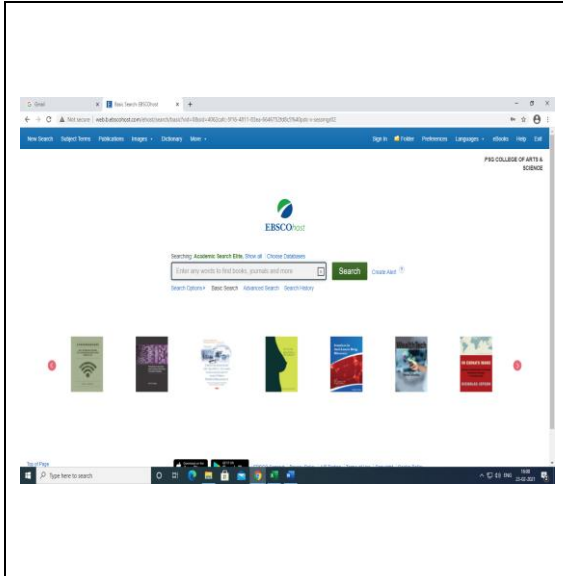




LIBRARY

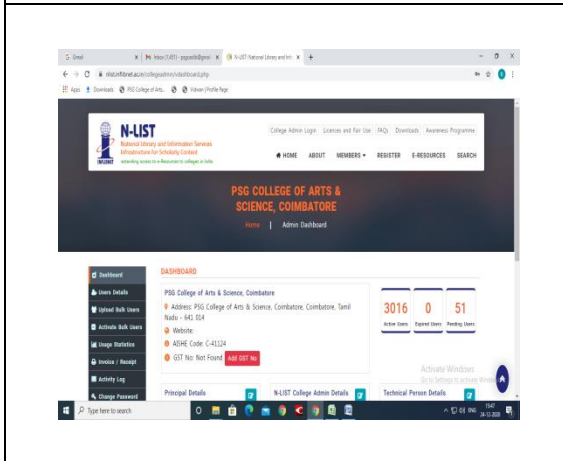
E-Resources available @ PSGCAS LIBRARY



EBSCO- Academic Search Elite - Resources database provide access to more than 1,220 active full-text journals indexed in Web of Science and Scopus and it includes the following subjects Animal Science, Biology, Chemistry, Mathematics, Physics, Science & Technology, Anthropology, Astronomy, Ethnic & Multicultural Studies, General Science, Geography, Geology, Music, Pharmaceutical Sciences, Psychology, Religion & Philosophy. Since it covers most of the subjects. In addition to this EBSCO- e-Book Academic Subscription collection provides access to more than 2 Lakhs eBooks.

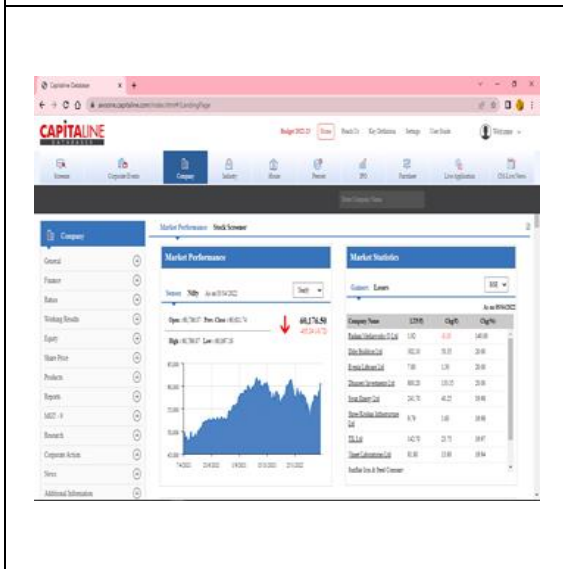
<https://search.ebscohost.com/>

User ID : psgcas Password : psg@2020



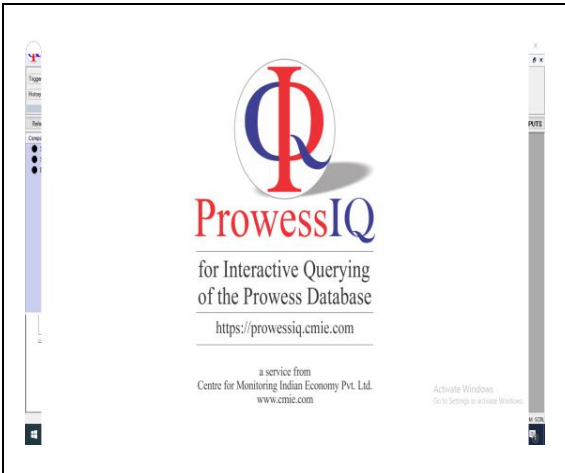
N-LIST: National Library and Information Services Infrastructure for Scholarly Content (N-LIST) provides access to more than 6,250 Journals and 95,000 e-books.

<https://nlist.inflibnet.ac.in/>



Capitaline AWS Database: The library has a ready stock of financial reports through the Capitaline plus Database. The information bank provides detailed financial and non-financial information covering over 35,000 companies with over 2,500 unique financial data items and 300 industry specific items. The Database is complimented with powerful analytical software tools to enable extensive querying and research.

<https://awsone.capitaline.com/index.html#/LandingPage>



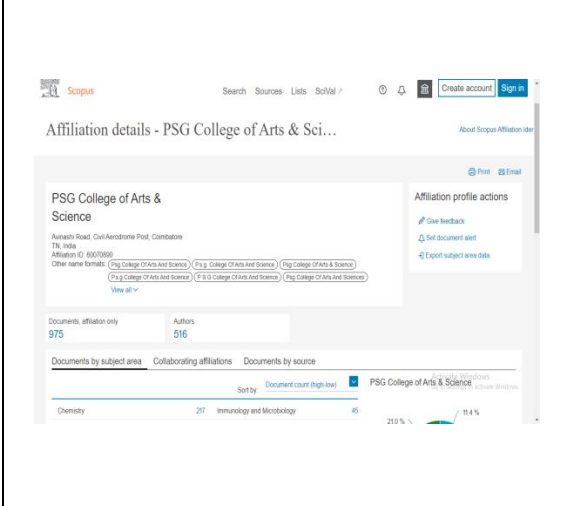
**CMIE Prowess:** Prowess is a database of large and medium Indian firms. It contains detailed information over 52,000 firms. These comprise of all companies traded on India's major stock exchanges and several others including the Central Public sector enterprises. The database covers most of the organized industrial activities, banking, organized financial and other service sectors in India.

<https://prowessiq.cmie.com/>



**INDIASTAT.com:** It is the authentic source for Indian statistics collected from the best sources for information and statistics on India. It provides socio-economic statistical data and useful information on India.

<https://www.indiastat.com/>



**Scopus :** Scopus is the largest abstract and citation database of peer-reviewed literature: scientific journals, books and conference proceedings. Delivering a comprehensive overview of the world's research output in the fields of science, technology, medicine, social sciences, and arts and humanities, Scopus features smart tools to track, analyze and visualize research

<https://www.scopus.com/affil/profile.uri?afid=60070890>



**Web of Science:** Web of Science is a publisher-independent global citation database. It is a research engine, delivering the library with best-in-class publication and citation data for confident discovery, access and assessment. It is used as both a research tool supporting a broad array of scientific tasks across diverse knowledge domains as well as a dataset for large-scale data for intensive studies.

<https://access.webofknowledge.com/>

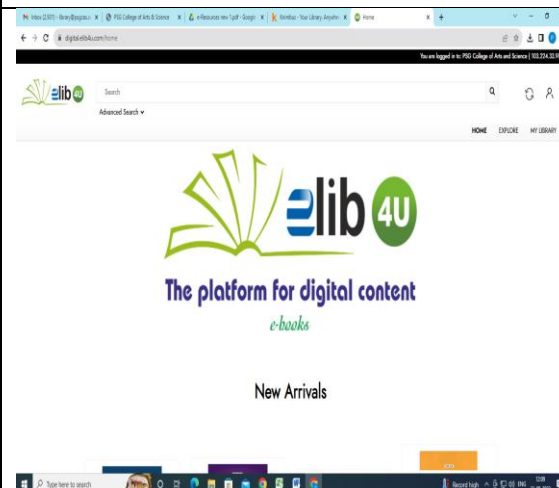
# ScienceDirect®



ELSEVIER

**ScienceDirect** is a large database providing full-text journal articles. ScienceDirect is a database from Elsevier containing a range of publications from foundational science to new and novel research. ScienceDirect provides 275 Journals in Computer Science and Engineering, 70 Journals in Bio Technology and 10 journals in Nano Technology (Back File Access from 2000 onwards)

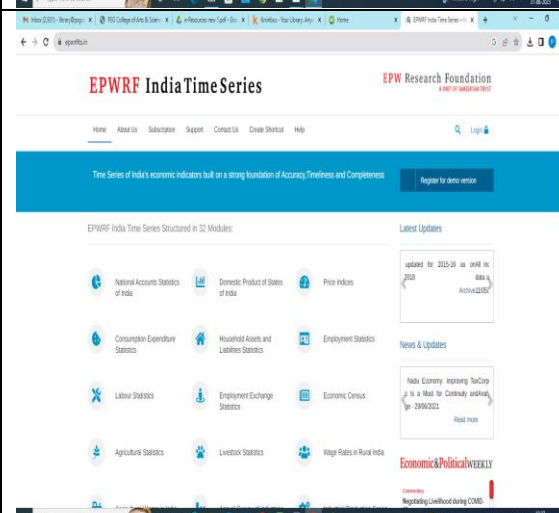
URL: <https://www.sciencedirect.com/>



## New Age International e-Books:

17 e-Books have subscribed. User can view e-books online as well as read offline after downloading to their devices.

URL: <https://digital.elib4u.com/home>



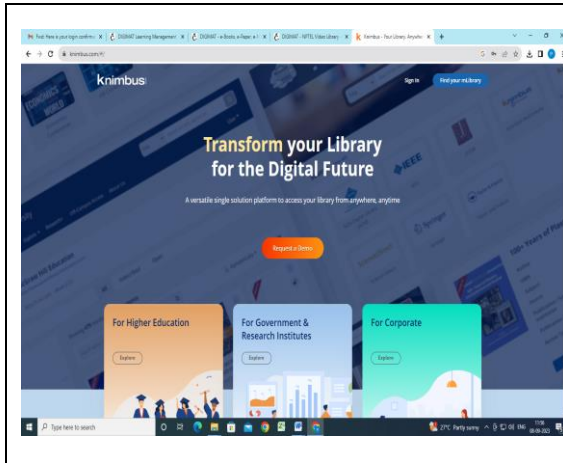
**EPWRF India Time Series** is a unique online database with its comprehensive coverage of Indian economy for a fairly long time period and it comprises over a lakh variables capsuled in 27 modules. The database tries to provide in continuous time series from 1950 depending on the availability.

URL: <https://epwrfits.in/index.aspx>



**DIGIMAT- Learning Management Platform.** A Learning Platform Integrated with OER. Access 1,03,000+ Videos of 60,000+ Hours of Educational Video Lectures, Preserve 1 Million+ e-Books, e-Papers, e-zines, Question Bank, Photos, Videos, Moodle LMS, Collaboration Tools, Integrated in offline mode.

URL: <http://elearn.psgcas.ac.in>



**Knimbus:** A Digital platform provides access of all subscribed online resources of the library.

URL : <https://www.knimbus.com/>